

Agglomeration Premium and Trading Activity of Firms

Péter Harasztosi and Gábor Békés¹

This version: 7 December 2009

Abstract

Firms benefit from proximity to each other due to the existence of several externalities. This paper analyses the productivity premium of firms operating in agglomerated regions. We argue that certain firms shall benefit more from externalities. Given the prevalence of evidence suggesting how firms active in international trade are different from non-traders in terms of using inputs or capital as well as in terms of performance, we focus on performance of international traders in agglomeration economies. Using Hungarian manufacturing data from 1992-2003, we confirm that traders are generally more productive, and all firms perform better in agglomerated areas. In addition, traders are found to gain more in terms of productivity than non-traders when agglomeration rises. Firms that are stable participants of international trade gain 16% if TFP as agglomeration doubles while non-traders may not benefit from agglomeration at all. Results also suggest that traders productivity premium is most apparent in urbanised economies. This suggests that traders benefit from particular spillovers available in more dense areas or higher productivity associated with trading firms, makes absorption of externalities more efficient.

Keywords: agglomeration, international trade, firm heterogeneity

JEL classification: F14, R12, R30

¹Péter Harasztosi: CEU and IE-HAS, Corresponding author: Budapest 1112 Budaörsi ut 45, harasztosi@gmail.com. Gábor Békés: IE-HAS, Budapest. We are grateful for comments by Marius Brühlhart, Balázs Muraközy, Miklós Koren, Gábor Kézdi, Gábor Körösi and seminar participant at Vienna, Edinburgh, IE-HAS and CEU Budapest. This paper was produced in the framework of MICRO-DYN (www.micro-dyn.eu), an international research project funded by the EU Sixth Framework Programme (www.cordis.lu) with socio-economic sciences and humanities (http://ec.europa.eu/research/social-sciences/index_en.html). This publication reflects only the author's views, the European Community is not liable for any use that may be made of the information contained therein.

1 Introduction

It is a frequently observed feature of economic geography that firms appreciate proximity to each other. Manufacturing belts, industrial clusters, cities or science parks are all manifestations of this phenomenon. Sometimes, actual geography, hills, rivers and sea-berth or the amount of sunshine will determine firm locations. However, centripetal forces of modern economies stemming from savings in transport costs, the collaboration of companies or various Marshallian externalities will result in such agglomerated areas.

Gains from being close to others yield economic benefits. Firms in more densely populated areas were found to be more productive.² While such a positive correlation between density and productivity might stem from natural advantages, the productivity premia of agglomerations can be attributed to savings and gains from external economies. These external economies are in the focus of present paper.

These externalities were of course proposed by Marshall (1920), who identified input-sharing, labour-market pooling and localised technological spillovers as key factors when examining the cutlery manufacturers in England. External economies and spillovers play important role also in growth literature. Endogenous growth models following Lucas (1988) emphasised the role of knowledge spillovers between firms as promoters of technological change and engines of development. More recently in a survey Hanson (2000) identified three broader channels that make more agglomerated regions more productive: (i) proximity of other firms reduce transport cost and created increasing returns to firms with fixed costs of production as in Krugman (1991), (ii) externalities created by the density of the firms in the locality increase productivity, and (iii) dense economic activity allowing for a greater degree of specialisation.

The basic picture about the higher productivity of agglomerations can be seized without firm level information through summary statistics, through regional level data. Using a cross section of US county level data Ciccone & Hall (1996) tested whether labour density affected productivity. They find that doubling labour density increases labour productivity by 6% on average. Using sub-regional data for a set of European countries (NUTS3-level data for Germany, Italy, Spain, France and the UK), Ciccone (2002) repeated the exercise and found that doubling the density of labour results in an average increase of 5% in labour productivity. Dekle & Eaton (1999) estimate the agglomeration effects would produce productivity growth in Japan only to find that agglomeration explains 5.6% labour productivity growth in manufacturing. More recently, Brülhart & Mathys (2008) estimate the effect of labour density across European regions. Estimating the long run elasticity between density and productivity on a panel of 20 European countries at NUTS-2 level, they find it to be 13%. They argue, that the higher elasticity found in CEE countries can be partly attributed to the legacy of central planning

² See Foster & Stehrer (2008) and Combes et al. (2009).

concentrating industries near the capitals.

Despite the primarily microeconomic nature of agglomeration economies, previously mentioned studies investigate the effect of agglomeration economies using regional level aggregate data and handle it as a black box. However, more recent studies imply, that external economies affect firm behaviour and performance differently depending on the characteristics of the firm and the extent of agglomeration.

On French firm level data Martin et al. (2008) has shown that agglomeration economies have significant though nonlinear effect. Firms are more productive in more dense environments only up-to a point, then productivity premia are diminished by the increasing congestion effects. They also found, that firms especially benefit from the proximity of the firms in their own sector. Doubling the sector employment size around a firm increases productivity by 4% on average.

Also, on French data Combes et al. (2009) tries to tell agglomeration and selection apart. The study concluded, that the observed productivity premia across French metropolitan firms are not due to the selection of more productive firms but to agglomeration economies. They also show, that agglomeration effects increase with the productivity of the firm. Though the firm-level empirical literature is only recently emerging findings, suggest, that not all firms benefit from agglomeration economies the same.

Investigating clustering of Danish firms, Strøjer Madsen et al. (2003) find significantly higher productivity of across concentrated firms. However, wood and textile manufacturing showed higher sensitivity to clustering than other sectors.

Motivated by these results present paper intends to open up the black-box of aggregation and to look more into the effects of firm level heterogeneity to the assessment of agglomeration economies. Given the prevalence of evidence suggesting how firms active in international trade are different from non-traders in terms of using inputs or capital as well as in terms of performance, the focus will be on the effect of agglomeration economies on international traders.

Since Bernard & Jensen (1999)'s seminal empirical paper on U.S. exporters, many have documented that trading activity is a rare and rather concentrated activity. Also, firms engaging in international trade, besides the fact that their products cross national borders, are different from non-trading firms in many aspects. These firms employ more and better skilled workers, pay higher wages and are more productive than firms selling within borders only. Many of these differences related to the operation of the firms were found and documented both for the U.S. and European countries for example Bernard et al. (2007) or Mayer & Ottaviano (2008).

While new economic geography and trade models (Krugman 1991, Ottaviano et al. 2002) explain the unequal spatial distribution of economic activity and international trade together, recent empirical literature on trading firms gives little guidance on the relationship between trading behaviour and agglom-

eration. We know, that international traders evaluate many location related factors differently. Indeed, traders are better off being in the proximity of first-geography factors such as national borders or bodies of water. As shown by Koenig (2005), French overseas exporters tend to locate near those cities and ports that provide access to their respective partner countries. We know less about the so called second-geography factors: proximity of other firms and density of economic environment.

This paper focuses on the agglomeration-productivity relationship by looking at the productivity premia of firms and investigate if certain firms, those who are active in international trade, behave differently. In other words, our central questions are if internationalised firms showed different performance in more densely populated environments and whether one could see a difference in their agglomeration premia with respect to not trading firms?

The rest of the paper is organised as follows. In Section 2 we argue why international traders might benefit from agglomeration economies. Section 3 introduces the data and discusses basic spatial issues. Section 4 discusses empirical strategy and estimation method. Section 5 estimates whether trading firms are more productive in more agglomerated environment. We find that trading firms show higher productivity in agglomerations, while no evidence of agglomeration economies are found across nontrading firms. Section 6 tries to identify the possible sources of the relatively higher productivity of traders in agglomeration by disentangling agglomeration into localisation and urbanisation and sees which correlates more with the productivity of trading firms. Furthermore, the category of trade status is refined by introducing export and import intensity measure. We find that agglomeration premium is increasing in both export share and import intensity.

2 Mechanics of Agglomeration

Agglomeration economies, as externalities to firms, are in fact sums of many individual externalities reinforcing each other. These are in most cases observationally equivalent, implying that its different channels are more likely to be distinguished theoretically than empirically. As Rosenthal & Strange (n.d.) put it: "it can be shown that agglomeration economies whose sources are knowledge spillovers, labour market pooling, or input sharing all manifest themselves in pretty much the same way." Though, we do not assess the contribution to agglomeration effects of these channels individually, this section provides a deeper insight into the agglomeration externalities.

2.1 Agglomeration forces

Input sharing: In a dense economic activity, individual firms have abundant opportunities for both the local outsourcing of inputs and the distribution of output, thus reducing transportation costs. In case of scale economies, upstream firms are able to procure their inputs more cheaply if they express demand in a more dense environment. That is, downstream firms in concentrated industry locations will be able to outsource their input needs, which creates a higher level of vertical disintegration. The love of input variety is not necessarily limited to one industry, but also applies to the interplay between many. This feature of increasing returns in intermediate inputs lies in the core of monopolistic competition models of economic geography and trade (see e.g. Ciccone & Hall (1996), Abdel-Rahman (1988)).

Labour market externalities: In agglomerations firms have access to established pools of labour that are both specialised and deep, thus minimising costs associated with search and training. In more urban environment education tends to be of better quality and due to the larger number of people development of special skills is more possible. Urban areas not only give better skilled and more specialised workers but also allow for better on-the-job human capital accumulation as pointed out by Glaeser & Mare (2001). These imply that firms will more likely to find the employee of their needs and thus better employment matches are created. Also, if a larger pool of employees are at disposal firms do not have to keep up ineffective matches. As shown by Bleakley & Lin (2007) workers have lower searching cost and lower tendency to leave own sector in denser labour market.

Knowledge spillovers: Concentration of firms is thought to enhance the production of knowledge and increase spillovers, via face-to-face exchange of tacit knowledge or through the mobility of human capital between firms. Knowledge spillovers are central element of innovation and R&D activity and economic development. Marshall (1920) described fertility of spillovers in section IV.X.7 as: 'if one man starts a new idea, it is taken up by others and combined with suggestions of their own; and thus it becomes the source of further new ideas.' If knowledge is tacit knowledge spillovers might be subject to geographical boundaries. The propagation of tacit knowledge requires face-to-face communication and is hard to capture or codify. Audretsch & Feldman (n.d.) and Jaffe et al. (1993) use patent citations as the result of knowledge spillovers to grasp the phenomenon. They find that R&D activity is rather localised across the U.S.

2.2 What is special in trading firms?

These agglomeration effects do not benefit all firms the same. Sensitivity to agglomeration economies depend on scale of operation, the special skill and production-technique needs of the firms, the degree to which the firm is part

of a vertically disintegrated production process. We argue that international traders specially benefit from aforementioned channels.

Better factors of production: Competing internationally is a demanding task for domestic firms. Innovation in product quality and services is essential to survive the competition. Firms in dense economic environment have better chance to find matching either domestic or foreign input to their production process, which makes her more productive and able to export its own products. Also, dense economies and/or industrially specialised regions provide better matching labour force in terms of skills and higher quality of human capital, which increases firm performance. When explaining the relative small ratio of Colombian exporters, Brooks (2003) finds that not sufficient level of product quality plays important role. More recently, Imbriani et al. (2008) investigating export propensity of Italian firms find that product quality gives strict ordering to firm in trading activity.

Meeting Scale requirements: Entering international market implies that higher than local or domestic demand concentrates in a firm or in a region. This is especially true in case of Hungary, a small open economy, where exporters in most cases sell to larger than local markets. In order to be able to compete abroad the scale requirements are substantial. Agglomeration economies - via input sharing - are able to create sufficient backward linkages, such that other firms find it more profitable to supply. Also, local outsourcing of parts of the production process is more likely.

Knowledge to trade: The fixed cost of international trade is often referred to as that of marketing, repackaging, finding distribution channels. These cost depend on the information availability on the foreign market at the place of production. Knowledge spillovers on the techniques of trade in an agglomerated environment tend to reduce these cost. E.g. Lovely et al. (2005) investigate the location of exporting firm headquarters in the U.S. They find that firms that export to not easily accessible countries tend to locate in each others proximity. Also, trade related tacit knowledge is more likely to circulate better in dense environment. In a recent study on tacit export knowledge, Soon & Fraser (n.d.) interviewing Australian exporters find that information on overseas business opportunities and on variations in export customer preference is a valued and not easy to get information for managers.

Export Spillovers: The idea of the export spillovers are connected to the previous point. It asks whether presence of other traders in the vicinity (mainly multinationals and FDI) affects extensive or intensive margin of trade of the local firms. Aitken et al. (1997) examine Mexican plants' export behaviour and find that propensity to trade is positively affected by presence of multinational firms in the same location, but is not affected by general exporter presence. On Colombian, Mexican and Moroccan data Clerides et al. (1998) find evidence of positive regional externalities. Most trading manufacturer are multi-product firms and handle complex processes. E.g. on average Hungarian manufacturers export 7, import 20 different HS6 category products. This presupposes advanced management and learning skills, higher absorption ca-

capacity. That is international traders are more able to harness technology and knowledge spillovers. The empirical evidence on this between traders spillovers are however mixed. For example Bernard & Jensen (2004) find that for US exporters the spillovers from other exporting firms is negligible, while Kneller & Pisu (2007) investigating export spillovers from FDI on UK data find that the presence of foreign multinationals in the same industry or region affect positively the intensive and extensive margins of trade.

Import Spillovers: Just as in the case of exporting activity, firms also might draw benefit from proximity of importers. Finding appropriate and reliable might be costly and local information spillovers can effectively lower fixed costs related to search. While there is growing evidence on the positive effect of imports on productivity see e.g. Halpern et al. (2009) or Acharya & Keller (2008), to the authors knowledge local import spillovers have been so far neglected by the literature and evidence is limited.

3 Data Description

The empirical analysis uses a panel of Hungarian manufacturing firms from 1992-2003 with very detailed firm level information on balance sheet and trading activity. The panel contains on average 15000 firms yearly³ of the manufacturing sectors ranging from 17 to 37 of the EU's NACE 2 digit classification. For detailed description of the dataset see Békés et al. (2009).

3.1 Hungarian geography

The balance sheet information provides the necessary variables to estimate productivity by value added or TFP. It gives further information on firm size and whether the firm is owned by a foreign owner. The balance sheet data has been merged with customs information, thus, we see whether a given firm is engaged in exporting or importing activity in the given year. In this study we will refer to a firm being trader in a given year if it is either exporting or importing.

On the geography side, the location of the firm points the headquarters, which in case of manufacturing coincides with the place of production with higher probability than in other sectors. The most disaggregated level of location identification at our disposal are zip-codes. Unfortunately the Hungarian zip-code system is not a one-to-one mapping, therefore larger geographical entities

³ From 2000 to 2003 number of firms drops in our panel. Size distribution comparison shows, that very small firms are missing in that period. To correct for this sampling anomaly, we drop firms with less than 5 employees from all years of the data.

are required. From larger to smaller these are: county (megye), micro-region (kistérség) and zipcode levels.⁴

Table 1
Summary of Hungarian administrative spatial zoning

EU level units	Hungarian equivalent	number	avg. size km^2
NUTS2	EU administrative region	7	13861
NUTS3	19 counties, Budapest	20	4651
NUTS4	micro regions	150	620
NUTS5	municipalities	3125	30

Hungary consists of 20 counties, which stratification includes the capital, Budapest as a separate entity and corresponds to the NUTS 3 level EU regional policy unit. A county holds eight micro-regions on average. The number of micro-regions was originally set to 150 by the Statistical Office, which was later modified to 168 and more recently to 173. Each micro-region contains approximately 4-10 towns and villages, which area corresponds to a range where firms are operating within a 20-30 km radius. Their average size is 620 km^2 and 70 thousand inhabitants. This study uses the 150 micro-region level stratification to assess agglomeration economies.⁵

3.2 Regional density and productivity distribution

In line with the aforementioned international findings, more densely populated regions are found more productive in Hungary. If firm level employment and value added are aggregate up to (NUTS-4) micro-region level, one finds that regions that have twice as many workers are about 19 percent more productive on average.

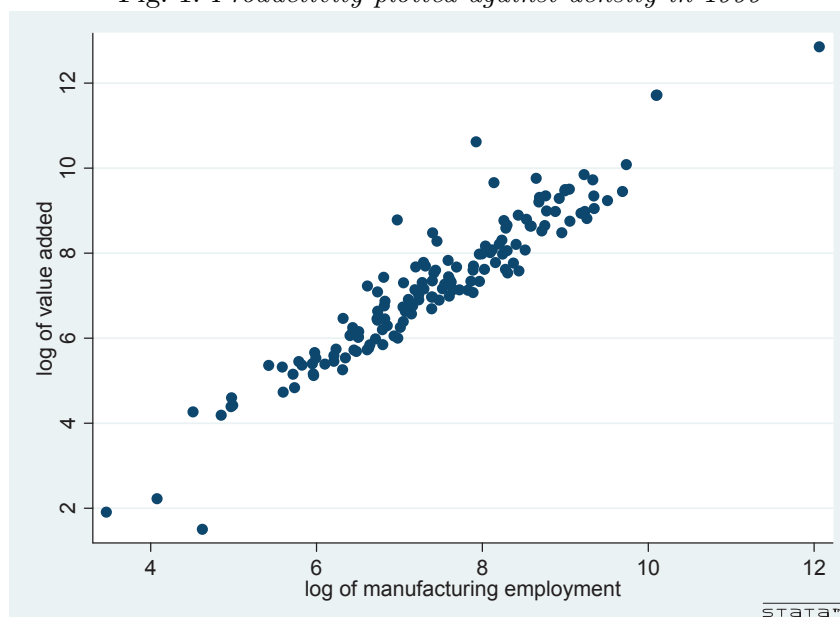
Figure 1 illustrates the productivity premium of the denser regions for the year 1999.⁶ The figure plots the density of manufacturing employment in a microregion against the average log productivity calculated over the firms of the microregion. Density as the number of employees / area captures the average distance between firms and people that will translate into a measure of easiness to communicate. It shows that firms in twice as dense, or agglomerated (larger in terms of employment/area) areas show a X% higher labour

⁴ While zipcode level is the most disaggregated information at hand we will not use them in this study for the following reasons: 1. There are many towns and cities that hold numerous zipcodes with considerable within-town variation over time. 2. There are zipcodes that correspond to two or more villages, small towns. Both hinder unique identification.

⁵ See Table 12 for summary statistics of the micro-regions.

⁶ In the Appendix we show the spatial distribution of the underlying variables on the maps of Hungary for 1999.

Fig. 1. *Productivity plotted against density in 1999*



productivity. This finding bodes well in international evidence, and this paper aims at dissecting this effect - turning to the firm level.

19 percent is the raw elasticity estimate obtained from regressing log of average value added in a micro-region on the employment density. Compared to raw elasticities found for other countries (see. e.g Ciccone (2002) for EU countries and Combes et al. (2008) for France) the Hungarian figure is rather high. Brühlhart & Mathys (2008), who find that both raw elasticity and the casual effect of agglomeration on productivity is higher in CEEC countries, explain the phenomenon as the heritage from the concentrated central planning around the capital cities.

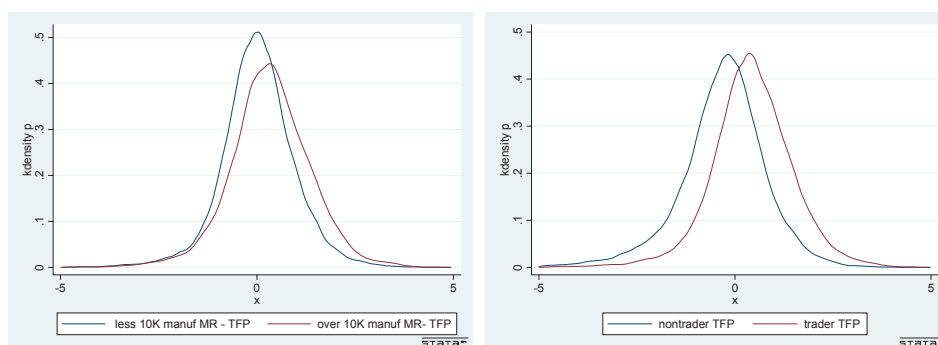
The essence of agglomeration is captured in cities. Cities provide indivisibilities, better skilled and more diversified labour force and a wider range of specialised services and suppliers that facilitate the emergence of agglomeration economies.

To have a sketch of the relationship between agglomeration and productivity at firm level a simple exercise is conducted. A crude, binary measure of agglomeration is proposed. Hungarian firms are divided into two groups, to those in cities with on average more than 10.000 manufacturing workers and to those located elsewhere. This distinction identifies the 10 most populated Hungarian cities as agglomerated locations.

Figure 2 panel a) compares productivity distributions of agglomeration and non-agglomeration firms. The figure shows that the productivity distribution of agglomerated firm is more dilated and its mean is more towards the positive segment of the productivity range. This suggest, that firms in different

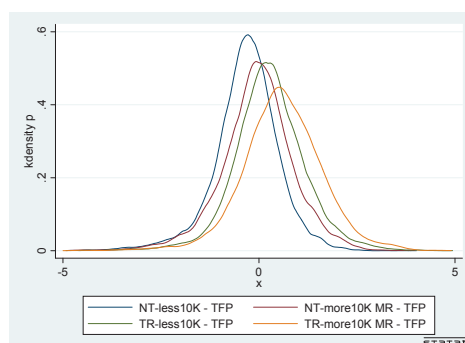
productivity quantiles are affected differently by agglomeration economies and there are more high productivity firms found in cities.⁷

Fig. 2. Productivity pdf's of Hungarian firms by trade and density in 1999



(a) by density

(b) by trade



(c) by trade and density

Panel a) displays the kernel density estimates of firms' TFP (Olley & Pakes 1996) in locations with more than 10 thousand manufacturing workers (red) and those with less (blue). Panel b) displays the kernel density estimate TFP for trading (red) and nontrading firms (blue). Panel c) displays a combination of the previous categorisation of firms.

On the contrary, in panel b) when productivity distribution of traders and nontraders are compared, we find that trading firms are approximately equally more productive in all quantiles. On average Hungarian traders are 50-60 percent more productive.

In panel c) the two previous approaches are combined. Productivity distribution of firms are separately displayed by agglomeration and trade. The graph shows that distributions over agglomerated firms are in both cases of traders and nontraders the dilated version of the non-agglomerated counterpart rather than shifted. Which reinforces the notion that agglomeration on average holds more productive firms. Result also suggests that trading firms in the cc. 10 largest Hungarian cities are the most productive ones, that is traders might

⁷ This result is analogous to the French finding by Combes et al. (2009)

be able to benefit more from an agglomerated environment.

However, while this preliminary picture gives a hint on the firm level agglomeration premium, it does not condition on firm characteristics and regional amenities. Thus, externalities at firm level will be modelled more explicitly.

4 Estimating agglomeration premium

Quantifying the importance of the agglomeration effects is not straightforward. First, higher productivity due agglomeration economies are observationally equivalent with advantage due to first geography factors, endogenous labour quantity and quality. For example, a region that is more productive due to good climate or fertile soil will attract more labour and firms, which implies that productivity and density are simultaneous determined. Second, as agglomeration effects are estimated as a factor of productivity functions. The different channels of agglomeration are rarely identified separately: it is handled as a black box. Third, the higher average productivity of firms in e.g. cities might be due to selectivity - low productivity firms are more likely to be forced out of the market. Thus, higher productivity of agglomerated regions could be explained by a composition problem.⁸ Fourth, agglomeration does not only have positive effects, but congestion effects such as pollution, higher factor prices etc. all play a role. This implies that measured agglomeration effects are the net of agglomeration benefits and congestion.

The key idea of agglomeration economies and spillovers, is that firms internalise production externalities: the presence of other economic agents enter their production function. Agglomeration economies might affect the technology of both capital and labour usage, thus we will assume they are Hicks-neutral. Given these assumptions, agglomeration economies can be expressed as shifters of the productivity of the firm to a Cobb-Douglas production function of firm, see eg. Henderson (2003) or Martin et al. (2008). In this specification an agglomeration variable enters the production function. Straight OLS estimation of such equation to get the casual effect running from agglomeration towards productivity has several shortcomings. Instead, the relationship between productivity and agglomeration is estimated directly the following way:

$$\begin{aligned} \ln TFP_{it} = & \alpha_1 \text{agglomeration}_{rt} + \alpha_{area} \text{area}_{rt} \\ & + \alpha_{ctrls} \text{controls}_{it} + v_r + \nu_i + \tau_t + \epsilon_{it} \end{aligned} \quad (1)$$

⁸ See e.g. Melitz & Ottaviano (2008) and Baldwin & Okubo (2006)

The variables in above equation are the following:

Variable *TFP* is total factor productivity is estimated by the procedure offered by Olley & Pakes (1996). The method is suitable to control for entry and exit, within sector restructuring which is needed because the sample contain years of the transition. However, the estimation procedure has been altered to be able to better compare firms engaged in different types of trade. The modification proposed by Amiti & Konings (2007) is used, which allows to control for productivity gains by the real exchange rate change of the imported intermediates and but also control for the origin of the input whether it is from low or high-wage country to control for the quality of the import as proposed by Altomonte & Békés (2009). The procedure is described in the appendix in detail.

In present paper, *agglomeration* variable is calculated as the logarithm of the employment of all the manufacturing firms in the same micro-region. The variable is same for all the firms in the given region within a year as it contains the firm itself. We control for firm employment in a separate variable.⁹ Area variable expresses the area of the microregion where the firm is located in log of square kilometers. Its inclusion is necessary to grasp the density nature of agglomeration and to express the relative proximity of firms within a microregion.

The *controls* include observable firm level characteristics: firmsize, a dummy variable indicating foreign ownership¹⁰, a dummy for sectoral category. Variables v_r , τ_t and ν_i allow for the possibility to control for unobserved regional characteristics, for temporal effects and unobserved firm specific time-invariant heterogeneities. Note, that is regional controls is a microregion dummy, then area controls cannot be identified separately.

Using specification in equation (1) allows to control for time invariant unobserved heterogeneity at firm level, which causes biased estimation. For example, in the case of geographical regions with better first geography (better access to markets, better transportation possibilities or infrastructure), factors unobservable to the researcher that both boost productivity and attract firms create endogeneity. Also, firms, even in the same sector might behave differently in terms of risk taking, innovation process. Also, more risk-taking firms are more likely to enter foreign trade, previously not served markets. This firm level idiosyncrasy might affect both productivity and location choice.

The Olley-Pakes method is able to correct for the simultaneity of input choices and idiosyncratic shocks, thus provides feasible solution for the endogeneity of

⁹ Our results are robust across the alternate specification of excluding own employment.

¹⁰ Throughout the paper, a firm is considered as foreign-owned if at least 10% of its capital is controlled by a foreign owner.

the capital and employment. Firms can foresee negative/positive technology shocks and respond by laying off/hiring workers. As our as most firm level panel data comes with yearly frequency, the economic shock captured by ϵ_{it} can be correlated with the employment.

However, this approach has the disadvantage of not handling the endogeneity of the agglomeration variable to the full extent. This way, unobserved contemporaneous regional productivity shocks that might affect any other firms choice of labour input thus influencing agglomeration variable are not controlled for. For this reason, finding that firms in agglomerated areas are more productive is better be referred as 'agglomeration premium' rather than agglomeration effect.

Another possibility for handling the endogeneity of the inputs and agglomeration variables together would be to use the GMM method put forward by Bond (2002). Our finding is however, that GMM estimations on the Hungarian data show rather unstable result with the starting point being excessively important.¹¹

Yet another problem needs to be solved, that arises from using aggregate indicators as regressors on firm level data. As pointed out by Moulton (1990) regressing aggregate variables on micro-level observations has the pitfall of underestimation of the standard errors of the coefficient estimate. This implies that the null-hypothesis of no effect of the group level variable is rejected with higher probability.

In our regressions agglomeration variables are aggregate variables and one might run the risk of underestimating the variance of the coefficient related to them. The downward bias in the estimation of variance is caused by the unobserved characteristics the firms that are in the same vicinity have in common. This indeed might be the case for a number of reasons, e.g. they choose employment from the same pool of labour, they are affected by the same changes in local policies and depend on same provider of utilities.

To control for the bias in the standard errors, Moulton (1990) suggest that standard errors should be clustered according to unit of aggregation. In present case, this implies that firm level regressions use regional (kistérség) level clustering.

¹¹ Calculations and results are available upon request.

5 Results

To assess the role of trading activity in the agglomeration and productivity relationship this section uses two approaches. First, to provide a baseline picture equation (1) is estimated as pooled OLS. A *trader* dummy and a cross-term between the trader dummy and the agglomeration measure is included to express the targeted agglomeration premia of traders, see eg. 2 below:

$$\begin{aligned} \ln TFP_{it} = & \alpha_1 \text{agglomeration}_{rt} + \alpha_2 (\text{agglomeration} \times \text{trader})_{rt} \\ & + \alpha_3 \text{trader}_{rt} + \alpha_{ctrls} \text{controls}_{it} + \tau_t + \epsilon_{it} \end{aligned} \quad (2)$$

Second, equation (1) is estimated by fixed effect specification on the separate samples of trading and nontrading firms. In principle the two approaches are the two side of the same coin, however separating the sample also allows for the controls to take up different estimates. This section will provide modifications on the sample to account for the possible differences across trading and nontrading firms. Furthermore, specifications using fixed effect setup are investigated to confirm choice of geographical unit and that allow agglomeration channels time to take effect.

5.1 Basic results

The pooled OLS estimations provide a good basic portrayal of the relationship between agglomeration and productivity. OLS results are summarised in Table 2. The first column starts with a baseline OLS regression, where the least restrictive geographical control is used: county. Results suggest, that on average firms in twice as agglomerated environment show 7.2 percent higher productivity. On top of this agglomeration premium traders appear 2.2 percent more productive in locations with twice as many manufacturing employment. The controls suggest that trading firms, larger firms and foreign owner firms are more productive. The next column uses an extra geography control named *bigcity*. This variable is a dummy, which takes up one if the firm is located in one of the principal cities of the 20 counties or in Vác or Budaörs, two cities by Budapest. The reason to include *bigcity* is to control for city amenities (infrastructure, transport hubs) that might attract firms and make them more productive and thus related to density of general population rather than manufacturing. We find, that dummy variable itself is positive and significant, implying that firms in the principle cities of the counties are 5 percent more productive. The control has only a minor effect on the other variables.

In the third column instead of county level, micro-region level dummies are

Table 2
Agglomeration premia of traders, OLS and fixed effects estimations

Dep. Var.: TFP	[1]	[2]	[3]	[4]	[5]
agglomeration	0.0727*** [0.00399]	0.0574*** [0.00453]	0.0746*** [0.0159]	0.0746** [0.0376]	0.107** [0.0447]
agglomeration x trader	0.0233*** [0.00297]	0.0228*** [0.00297]	0.0239*** [0.00299]	0.0239*** [0.00382]	0.00583* [0.00336]
trader	0.175*** [0.0283]	0.180*** [0.0283]	0.169*** [0.0284]	0.169*** [0.0391]	0.0948** [0.0389]
firmsize	0.205*** [0.00296]	0.205*** [0.00297]	0.205*** [0.00298]	0.205*** [0.0165]	0.126*** [0.0221]
foreign ownership	0.223*** [0.00674]	0.223*** [0.00674]	0.225*** [0.00675]	0.225*** [0.0323]	0.0279** [0.0124]
area	-0.119*** [0.00919]	-0.126*** [0.00922]			
bigcity		0.0629*** [0.00916]	0.132*** [0.0124]	0.132*** [0.0242]	
Constant	-0.488*** [0.104]	-0.322*** [0.106]	-1.749*** [0.184]	-1.749*** [0.132]	-1.383*** [0.386]
dummy: year	yes	yes	yes	yes	yes
dummy: sector	yes	yes	yes	yes	
dummy: county	yes	yes			
dummy: micro-region			yes	yes	
Moulton corr. errors				yes	yes
firm fixed effect					yes
Observations	100630	100630	100630	100630	100630
R-squared	0.326	0.327	0.334	0.334	0.045
Number of id					19150

*** $p < 0.01$, ** $p < 0.05$, * $p < 0.1$
standard errors in parentheses

included. Besides refining geographical control micro-region level dummies implicitly control for the area of the geographical units over which our agglomeration variable is defined. Thus, using micro-region level controls also adjusts our agglomeration variable toward the notion of density, and captures the average distance between firms and people which translates into a measure of easiness to communicate.¹² Third column results show a general agglomeration coefficient of 7.4 percent and 2.2 percent for the coefficient of the crossterm.

The fourth column, our preferred OLS specification, repeats the previous specification, but clusters standard errors according to micro-regions. As discussed previously, using aggregate measures as regressors might run the risk of underestimating standard errors. Using Moulton correction, estimated standard errors increase considerably for the coefficients of column four. For example in case of the coefficient of *agglomeration X trader* variable the standard error estimate increases from 0.003 to 0.004. This highlights the importance of clustering and allow to reduce the risk of falsely rejecting the null-hypothesis of no effect.

OLS results so far suggest that trading firms are on average 2.3 percent more productive in double dense environment than non-traders. It reinforces the

¹² Note, that including area measure or using micro-region level dummies yield the same results.

unconditional picture portrayed in Figure 2 of international traders being more productive in agglomerations with firm and location level conditions. OLS however fails to control for firm specific unobservables that might be correlated the agglomeration variable. Thus, fixed effects estimation is employed in the fifth column of Table 2.

The inclusion of firm fixed effect will not only control for the unobservable characteristics of the firm, but also that of the region that contains it. Thus it allows to controls for favourable first geography characteristics that both increase productivity and attract more firms. In case of traders it implies that we are able to control for proximity to borders, transport hubs, rivers which both fosters productivity and agglomeration of traders.

Furthermore, fixed effects specification is able to control for initial condition problems, which alleviates possible biases from spatial sorting. If more productive traders were more likely to locate in agglomeration then not considering ex-ante higher productivity would result in attributing effects from spatial sorting to that of agglomeration. This phenomenon may be a result of increased competition of bigger cities allowing for the fittest firms to survive. Recently, Combes et al. (2009) tried to distinguish between agglomeration effects and selection of better firms for French firms. They find evidence for the former and little or no evidence for selection. Nevertheless, as fixed effects estimation identifies from within firm variation of agglomeration variable, which is identical for both traders and non-traders by not excluding own employment, the agglomeration premia measured by within estimation can not be entirely attributed to spatial sorting.

Column five of Table 2 equation (1) using cross-term and firm fixed effects. There are two major differences found with respect to OLS estimation. One is that coefficient of agglomeration increased to 0.1 the other is that we find that trading firms are only 0.5 percent more productive relative to nontrading firms in a twice as agglomerated environment. These result suggest the importance of firm level unobservables and that of spatial sorting. The decrease in the agglomeration premium of traders suggest, that more productive traders are more likely 'self-select' to agglomeration.

Note, that the variable of interest, the cross-term involving trader status and the agglomeration variable, is identified differently than in the OLS case. It is identified from those firms that switch trading status and their surrounding shows considerable change in the size of employment over time. However, we would like to narrow identification of agglomeration premium of traders to changes in the agglomeration variable and not changes in trade status. The reason for this focus are the following. First, evidence from Békés & Muraközy (2008) suggest considerable simultaneity between trade status change (becoming trader) and sales/productivity growth in case of Hungarian firms.

Table 3
Agglomeration premium by trading activity - separate samples FE

Dep. Var.: TFP	firms that trade in their time present		
	never	occasionally	always
agglomeration	0.0642* [0.0364]	0.109* [0.0587]	0.163*** [0.0578]
firm size	0.0650*** [0.0165]	0.138*** [0.0241]	0.163*** [0.0339]
foreign ownership	-0.0134 [0.0147]	0.0257 [0.0241]	0.0749*** [0.0178]
Constant	-0.889** [0.344]	-1.239** [0.507]	-1.846*** [0.536]
Observations	27725	48642	24263
R-squared	0.023	0.037	0.082
Number of id	6774	8428	3948

*** $p < 0.01$, ** $p < 0.05$, * $p < 0.1$

Moulton corr. standard errors in parentheses

Second, changes in trade status both involves firm starting to trade and firm discontinuing international trade activity. These firms might be affected differently by agglomeration economies. Third, a considerable amount of trade status changes are on and off changes and can be regarded as 'accidental trade', while we would like to examine firms that traders equilibrium sense, see Melitz (2003).

Therefore, the sample of firms is divided into three. The first subsample involves firms that never trade. The second those firms that trade occasionally, that is, it contains firms who start and discontinue to trade, or trade occasionally, while the third subsample includes firms that always trade. In this latter sample firms are allowed for time to build, that is firms not trading in their first year present in the sample are considered always traders.

On each subsample equation (1) is estimated using within specification. The results displayed in Table 3 imply that firms that are involved in international trade show higher productivity in agglomerated economies than nontrading firms. Also, one can observe a ranking of agglomeration premium as trade involvement over the subsample increases, both in significance and the magnitude of the coefficient estimate.

Nontrading firms on average show 6 percent higher productivity in twice as agglomerated environment environment, while always traders exhibit 16 percent of such premium. Occasional traders show an inbetween premium. Results showing that always and occasionally trading firms show higher than ten percent productivity premium in twice as dense economic environment suggests, that a considerable part of the general agglomeration premia found in Hungary is due to international traders. Note, that this primary role of traders in agglomeration premium detected remains to be true should part of the result arise from spatial sorting.

In the following subsections we take a closer and more careful look at the results of Table 3.

5.2 Controlling for the difference of traders

Trading firms differ from non-traders in a number of characteristics. Table 4 borrowed from Békés et al. (2009) illustrates the difference across trading firms in Hungarian manufacturing. It shows coefficient estimates of exporter and importer dummies regressed on the variables in the first column. We see that traders are more productive, more capital intensive and more than three times larger than non-readers. Therefore, one might argue, that running regressions with the purpose of comparing these two subset of firms runs the risk of making comparison across different parameter distribution. Hence, finding different agglomeration coefficient of traders and non-readers is affected by the fact that we do not restrict other parameters to be equal across firms. As indeed visible from firm size and foreign ownership might have a different on trading and nontrading firms.

Table 4
Exporting and importing premia across manufacturers

	exporter premia	importer premia
log of employment	1.525	1.313
log of value added per worker	0.388	0.533
log of TFP Productivity	0.850	0.947
log of average wage	0.395	0.456
log of capital per worker	0.346	0.357

Harnessing a simple technique developed for propensity matching approach, the overlap in covariate distributions is improved by trimming the subsample of traders and non-readers. The procedure, taken from Imbens & Wooldridge (2008), is as follows: as a first step a logit regression is run to express the probability of being a trader while controlling for productivity, foreign ownership, firm size, general agglomeration variable and also time, region and sector fixed effects.

$$Pr(\text{trader}=1) = \beta_1 \text{agglomeration}_{rt} + \beta_2 \ln(\text{TFP})_{rt} + \beta_3 \text{controls}_{it} + \varsigma_r + \chi_t + \psi_{it} \quad (3)$$

Obtaining the propensity score for each observation the subsample of traders is trimmed by excluding those in the highest 20% of the score distribution of traders. Also, observations of non-readers being in the lowest 20% of the respective score distribution were dropped. The trimming resulted in neglecting firms whose characteristics imply, that it is very unlikely that they could be in a different trade status. Though Figure 2 suggests, that there is a considerable

overlap in the productivity distribution of traders and non-readers, we would like to lessen the effect of high productivity traders on our results.

The coefficient estimates on agglomeration variable using the trimmed sample are collected in the third row of Table 5.¹³ To facilitate easier comparison the table also collects coefficients from regressions using plain fixed effects in its first row and replicates results of Table 3 in its second row. The second row unlike the first uses clustering of standard errors. We find that Moulton correction reduces the significance of estimates in case of the non-trader and occasionally trader sample. When comparing results from full subsamples to those obtained from using the trimmed sample two changes are observed. The coefficient in case of never traders sinks from 6 percent to 0.6 percent and also it is not significant at any level.

The result imply that only trading firms show productivity premium in more agglomerated environment and no agglomeration premium across nontrading firms can be confirmed. It is important to note, that previous positive premium in case of never traders were due to the strong difference of firm characteristics across the subsamples.

Table 5
Agglomeration coefficient estimates - various FE specifications

Dep. Var: TFP	firms that trade in their time present		
	never	occasionally	always
<i>agglomeration</i> when			
plain FE	0.0587*** [2.827]	0.109*** [5.782]	0.164*** [6.998]
Moulton correction	0.0642* [1.766]	0.109* [1.858]	0.163*** [2.827]
Trimming	0.00623 [0.195]	0.112* [1.836]	0.170*** [2.940]
SL-controls	0.0517 [1.469]	0.0941** [2.042]	0.167*** [2.822]
Budapest omitted	0.023 [0.867]	0.0232 [0.692]	0.128** [2.098]

Standard errors in parentheses. Except for first row, results use Moulton errors.;
*** $p < 0.01$, ** $p < 0.05$, * $p < 0.1$

Each row represents a separate regression triple. The coefficients of agglomeration variable are collected only. The first row is fixed effect without Moulton correction. The second row replicates first using clustering of the standard errors. The third uses subsamples after most and least likely traders have been dropped. The fourth row uses spatial lag controls. The fifth uses a sample without Budapest located firm..

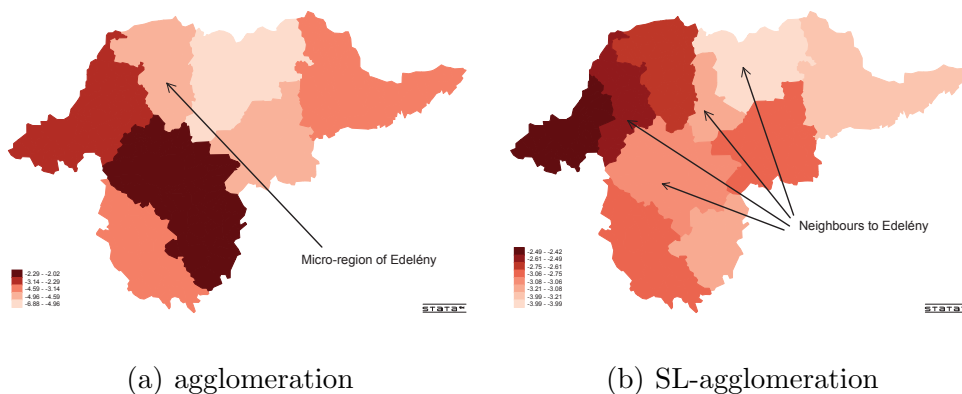
¹³ The detailed results for the estimations using trimmed sample and others in Table 5 are available in the Appendix in Table 13.

5.3 Adding spatial dependence controls

When choosing micro-region level stratification as the basic unit as boundaries to external economies we neglected the possibility, that agglomeration ranges further than this artificial unit. Artificial division of space generates the problem that regions that are economically bound are separated.¹⁴ Stratification divide-up the more or less continuous economic and social space. This is often the case when examining metropolises or economic regions that very previously separate cities. Also, when two regions share the same natural resource: a mountain with ores or a river. In the data, therefore, the e.g. the population of the neighbouring regions will be correlated spatially.

This problem can be remedied by point pattern analysis, using the exact geographical location of the firm or plant. Recently, Cainelli & Lupi (2008) use this approach when estimating effects of agglomeration economies in Italy. Their results suggest that the use of geographic units such as standard metropolitan units, administrative regions or provinces can be misleading. Using exact distances between economic units also allows for the estimation of scope of agglomeration effects, which fade over space.

Fig. 3. Creating SL variables: Example Borsod county densities 1999



Panel a) show the spatial distribution of manufacturing employment (in logs) in Borsod county. Panel b) shows the distribution of manufacturing employment of the neighbouring microregions calculated for each region (in logs). The darker colours imply higher agglomeration.

Unfortunately our data does not allow for such analysis, as exact address and thus such valuable information such as GPS coordinates are not at our disposal. Instead, to control for agglomerations effects not bound within microregions firm level regressions including both the average characteristics of the immediate neighbouring micro regions are estimated. Note, that controlling for this effect is different from the fixed effects specification as it allows

¹⁴This problem is referred to as that of modifiable areal units (MAUP). For more extensive discussion of the problem see e.g. Briant et al. (2008), Combes & Overman (2004)

for time variance in characteristics of the greater neighbourhood of the micro-region.

Figure 3 provides an illustration of the spatial autocorrelation problem and also comes to help the understanding of the creation of spatial lag variables (we use *SL* prefix for spatial lag). On the left of the figure one can see the 9 microregions of Borsod county coloured according to the distribution of manufacturing employment in 1999. Borsod is the north-east of Hungary, all borderlines to the north are the national border to Slovakia. We pick a micro-region, Edelény as all its neighbours are within Borsod county. As pointed to on the left part of the graph Edelény is surrounded by two very dense regions from west and south-west. Thus actually Edelény, though itself is not that populated can be considered as part of a broader agglomerated region.

Not considering spatial dependence induces problems. For example, if firms might find it profitable to locate to Edelény as they are still in the proximity of the dense and productive location of e.g. Miskolc. Then given that, considerable amount of firm like to do so, then own density and productivity will be correlated positively to both productivity and density of neighbours. Then given the assumed positive relationship between own and neighbouring micro-regions density and productivity, ignoring spatial autocorrelation will result in the overestimation of the agglomeration effect.

To control for this possible bias, spatial lag variables of employment and productivity were constructed the following way. We took the manufacturing population and value-added measures summed over the immediate neighbouring micro-region and expressed total log of total employment in the proximity and productivity as log of total VA per total employment. Thus each micro regions immediate neighbourhood is accounted for. In the right part of Figure 3, the micro-regions of Borsod county are coloured according to the density of their neighbours. Edelény is now more heavily coloured indicating its proximity to densely populated regions.

$$\text{SL-agglomeration}_{rt} = \ln \sum_i \mathbf{I} \text{ employment}_{it} \quad (4)$$

$$\text{SL-productivity}_{rt} = \ln \frac{\sum_i \mathbf{I} \text{ va}_{it}}{\sum_i \mathbf{I} \text{ employment}_{it}} \quad (5)$$

Where, *va* is firm level value added and \mathbf{I} is an indicator function, which takes up value one if firm is located in the neighbouring microregion to *r*. Adding spatial dependence variables the specification to be estimated by fixed effects becomes:

$$\begin{aligned}
\ln TFP_{it} = & \alpha_1 \text{agglomeration}_{rt} + \alpha_{ctrls} \text{controls}_{it} \\
& + \alpha_{SLA} \text{SL-agglomeration}_{rt} + \alpha_{SLP} \text{SL-productivity}_{rt} \\
& + v_r + \nu_i + \tau_t + \epsilon_{it}
\end{aligned} \tag{6}$$

The fourth row of Table 5 collects the results from fixed-effects regressions including spatial lag variables for neighbouring manufacturing density and productivity. Neighbouring productivity is found important for non-trading firms only, thus it does not change our basic inference about traders agglomeration premium.

We found that possible benefits from agglomeration can be primarily captured by choosing microregion as basic spatial unit. Micro-regions are not too small, such that its economy would be generally dependent on its neighbours. Results thus imply, that agglomeration benefits do not expand over the 15-30 km radius of the micro-region.

5.4 *Controlling for Budapest*

Another reduction of the sample may be crucial given the centralised nature of Hungary. Budapest, the capital of Hungary is the most economically dense part of the country. Almost 40 percent of economic activity takes place in Budapest, which holds about twenty percent of the population and twenty-four percent of the manufacturing population. It is important to see, whether the fact that Budapest can be considered an outlier in the Hungarian economic geography has a major effect on the results. Brülhart & Mathys (2008) in their investigation of agglomeration effect in case of CEE countries point out the important role of regions close to capitals.

To control for possible outlier driven results all firms having their headquarters located at the capital are omitted. Estimation results are displayed in the last row of Table 5.

Two changes with respect to the whole country sample are detected. First, coefficients of never and occasionally trading firms are insignificant. This finding further confirms the agglomeration premium traders enjoy. Second, the always trader estimate is both lower and less significant if Budapest firms are excluded from the estimation.

Results suggest, that only the most intense traders enjoy agglomeration premium. Though, we confirm that the agglomeration force exercised by Budapest has a great impact on Hungarian economic geography.

5.5 Closer to Causality

Another important aspect of using fixed effects estimation is that it implicitly assumes changes in the local density of economic activity has immediate effect. However, benefits from agglomeration might take time to harness. The flow of e.g. trade related information propagated by managers leaving a firm for another might take some time to take actual effect, have new contracts concluded, new markets targeted.

To allow agglomeration not only to have immediate effect lags of agglomeration variable will be included in equation (1) when conducting fixed effects estimation on samples of never and always traders. The specification to be estimated:

$$\lnTFP_{it} = \sum_{s=2}^{-1} \alpha_{1s} \text{agglomeration}_{r(t-s)} + \alpha_{ctrls} \text{controls}_{it} + v_r + \nu_i + \tau_t + \epsilon_{it} \quad (7)$$

The inclusion of lags and leads of agglomeration has another advantage, namely it might remove remaining simultaneity between contemporaneous micro-region specific shocks and employment choice of local firms. This allows to argue more convincingly for a causal relationship between agglomeration and productivity.

Table 6 displays results using agglomeration variable leads and lags. It consists of two panels, A collects regressions for never traders, B contains regressions for always traders. The first column in each panel replicates of Table 3, it uses contemporaneous agglomeration as regressor and Moulton corrected standard errors.

Columns from 2 to 4 use $t-1$ and $t-2$ lag of agglomeration variable. The results in case of never traders reveal that there is no significant relationship between past changes in agglomeration and current productivity. However in case of the always trading firm all past lags used, either used individually or jointly appear to be positive and significant. Column 4 using both lags and contemporaneous agglomeration measure suggests that it may last at least one year to have agglomeration benefits realised: the contemporaneous variable is not significant when past values are also included.

In column 5 both past and future value of agglomeration variable are included. We find that future value of agglomeration is significant, while lagged value is not. The finding in case of always traders is just the opposite.

Results suggest that higher productivity of traders in more agglomerated environment can be partly attributed to causal relationship. However, the previously detected positive relationship between agglomeration and productivity

Table 6
Timing Approach to Causality

Dep. Var. TFP	[1]	[2]	[3]	[4]	[5]
Panel A: never trading firms					
agglomeration (t+1)					0.0715** [0.0362]
agglomeration (t)	0.0642* [0.0364]			0.0162 [0.0349]	
agglomeration (t-1)		0.0685 [0.0441]		0.0461 [0.0368]	0.0468 [0.0343]
agglomeration (t-2)			0.0364 [0.0491]	0.0223 [0.0417]	
Observations	27725	21522	16672	16334	16651
R-squared	0.023	0.031	0.029	0.029	0.028
Number of id	6774	5299	4153	4083	4166
Panel B: always trading firms					
agglomeration (t+1)					0.0633 [0.0676]
agglomeration (t)	0.163*** [0.0578]			0.0768 [0.0621]	
agglomeration (t-1)		0.194*** [0.0458]		0.0844* [0.0432]	0.162*** [0.0506]
agglomeration (t-2)			0.203*** [0.0475]	0.118*** [0.0365]	
Observations	24263	20651	17449	17449	17469
R-squared	0.082	0.064	0.059	0.06	0.064
Number of id	3948	3301	2817	2817	2826

*** $p < 0.01$, ** $p < 0.05$, * $p < 0.1$, Moulton corrected standard errors
Controls: firm size, foreign ownership, year effects, constant

in case of never trading firms cannot be regarded causal. In case of nontraders only the lead of agglomeration variable was found significant.

6 Possible channels of the traders' premium

In this section traders premium is further investigated by refining trade and agglomeration measures. First, agglomeration is separated to measure own sector concentration and agglomeration implied by employment belonging other industries. Second, trading status will be examined separately for exporters and importers taking the intensity of trading into account.

6.1 Separating urbanisation and localisation

Glaeser et al. (1992) proposed the separation of agglomeration to localisation and urbanisation effects. Localisation economies arise from spatial concen-

tration of firms that belong to the same industry. Urbanisation economies, as proposed by Jacobs (1969), arise from the wider variety of industries and firms cross-fertilising each other. The two ideas propose different regional policies: localisation implies specialisation of a region in one or few industries or formation of clusters, while urbanisation favours access to larger variety of inputs and promotion of industry co-location.

The within industry external economies (localisation) explicitly model the original Marshallian idea that co-located firms within industry may share common buyers and suppliers that create increasing returns, they might harness specialised labour force. Also, workers are more likely to change jobs within industries facilitating knowledge spillovers. Between industry externalities (urbanisation) represent the wider variety of intermediate inputs and knowledge that also generate increasing returns and proxy the fact that production takes place in a more urbanised environment.

Recently, Martin et al. (2008) have investigated relative importance of localisation to urbanisation on French firm level data. They have found firms benefit from localisation rather than urbanisation. This study uses their formal definitions. Thus, the localisation measure at firm level is:

$$\ln LOC_{it} = \ln(\text{employment}_{tkr} - \text{employment}_{it} + 1)$$

where sector is k and location is r . Also, to separate urbanisation effect, that is the spatial concentration of employment of the other sectors in a given micro-region, urbanisation is defined as:

$$\ln URB_{kt} = \ln(\text{employment}_{tr} - \text{employment}_{tk} + 1)$$

When separating localisation and urbanisation variables similar econometric problems are encountered as in the previous section. Thus, equation (1) is modified the following way:

$$\ln TFP_{it} = \gamma_1 \ln URB_{kt} + \gamma_2 \ln LOC_{it} + \gamma_3 \text{controls}_{it} + v_r + \nu_i + \xi_{it} \quad (8)$$

More attention is paid to the localisation premium in this section for the following reasons. First, localisation is defined more tangibly. While, as a urbanisation is a necessary complements of localisation in describing regional economic geography it does not provide information on the actual quality of diversity. Second, as we argued in the introduction, trade related external economies, such as trade specific (product or market) information, skilled labour and scale effects are more likely to work within industry.

We estimate eq. (8) with as fixed effect panel specification using.¹⁵ To assess

the role of trading firms, again, dual approach is used: incorporation of cross-terms of trader dummy with the agglomeration variables and separating the sample into trading and not trading firms as before. To alleviate possible biases from the contemporaneous change in trade status and the density of economic environment in cases when cross terms are included and also when subpopulation are separated we excluded those firms that switch trade status.

Table 7
Firm level within estimations: urbanisation and localisation premia by trading

Dep. Var.: TFP Pro-ductivity	all firms	never trade	always trade
localisation	0.0149 [1.195]	0.0239** [2.161]	0.0328** [2.325]
urbanisation	0.0239 [0.391]	0.0432 [1.310]	0.0648* [1.751]
trader	0.316*** [12.27]		
urbanisation X trader	0.0556 [0.649]		
localisation X trader	0.0260** [2.115]		
Controls*	yes	yes	yes
dummy: year	yes	yes	yes
Observations	79855	40690	39165
R-squared	0.048	0.024	0.081
Number of id	14843	9167	5676

* Size, Ownership, constant

Moulton corrected errors, t statistics in brackets

*** $p < 0.01$, ** $p < 0.05$, * $p < 0.1$

The results are displayed in Table 7. Estimation using cross terms of localisation and urbanisation for identifying trader premium finds no significant general agglomeration coefficient, however, suggests that traders show better performance in more localised but not urbanised environment. Regression on separate samples reinforce the higher localisation premium for traders. While the localisation coefficient for non-readers is 2.4 percent, the corresponding figure for non-readers is 3.3 percent. Furthermore, separate sample regressions imply that traders show higher productivity in more urbanised environment unlike non-readers. Though the six percent urbanisation coefficient is only significant at the ten percent level results suggest that besides the localisation, a considerably share of previously found agglomeration premia of traders stems from urbanisation.

¹⁵ When defining localisation we may find often firms that do not have any same sector neighbour within a micro region. This would imply $empl_{tkr} - empl_{it}$ is zero. Note, that we added one to both of the agglomeration variables so that we can take logarithm even in this case. This might not be as innocent as it looks: zero will appear for some firms as multiplier in their production functions due to the log-log specification. To test our possible error in inference we ran key equations excluding such firms. We found that our primary estimates of localisation are actually lower than those, independently of trade status.

6.2 Export and Import

After the voluminous literature on the difference of exporters to other firms in many respect, recent studies suggest, that import is equally important predictor of firm heterogeneity. See for example Bernard et al. (2007) for exporters, Castellani et al. (2008) or Altomonte & Békés (2009) for comparing exporters and importers. For these reasons were both kinds of traders examined. However, so far traders, either exporter or importer were treated alike, though, exporters and importers might not draw the same benefits from agglomeration. For both exporters and importers spillovers of information about the foreign market and foreign channels are key. However, export and import related information differ. Exporters require information to market their final product: they are in need of distribution channels, they require information on the consumer behaviour, changes in regulations and standards. Importers require information for intermediate inputs: they are in need of foreign suppliers who provide input that meets their quality, price and timing needs. Import firms in agglomerated environment for example are more easily targeted foreign promoters and thus can import from abroad more easily. Also, it is important that set of export and import partner countries differ in Hungary. While in both cases Germany and European countries are foremost partners, in case of imports Asian and Far Eastern countries share over time. Given the cultural distance and language barriers with these countries, to access trade related information might differ in case of imports.

Table 8
Firm level within estimations: Exporters and importers separately

Dep. Var: TFP	all firms	all firms	non traders	exporters	importers
agglomeration	0.113** [2.522]	0.104** [2.346]	0.0483 [1.351]	0.104** [2.212]	0.125** [2.445]
exporter	0.188*** [3.577]				
importer		0.0778* [1.747]			
agglomeration X exporter	-0.0059 [-1.242]				
agglomeration X importer		0.00844** [2.076]			
Controls *	yes	yes	yes	yes	yes
dummy: year	yes	yes	yes	yes	yes
firm FE	yes	yes	yes	yes	yes
Observations	100630	100630	38460	47922	55113
R-squared	0.043	0.045	0.019	0.07	0.06
Number of id	19150	19150	11205	10788	12211

* size, ownership, constant

Moulton corrected errors, t statistics in brackets

*** $p < 0.01$, ** $p < 0.05$, * $p < 0.1$

To assess the relative importance of the type of trade for agglomeration premium regressions are estimated both on separated sample and on full sample

with cross terms of trade status and agglomeration included. The results are displayed in Table 8, where the first two columns are full sample within regressions for examining exporters and importers premia and the last three columns use specific subsamples of firms, never traders, always exporters and always importers. Separated sample regressions imply that both exporters and importers show higher productivity in more agglomerated environment than non-traders. Also, importers seem to have a bit higher premium. The close results in case of exporters and importers are in case due to the large number of two-way traders in the Hungarian economy. The regressions using cross-terms confirm that importing activity plays a more important part in the higher agglomeration premium of traders.

The relative advantage of importers in agglomeration premium can be attributed to higher sensitivity to urbanisation. In Table 9 the last three columns of Table 8 is replicated with replacing general agglomeration variable with urbanisation and localisation to disentangle possible effects. The results confirm the higher localisation premium of trading firms in case of both exporters and importers. However, urban premium is the most significant in case of importing firms, constituting a considerable part of traders agglomeration premium.

Table 9
Firm level within estimations: urbanisation and localisation by exports and imports

Dep. Var: TFP	never trades	exports	imports
localisation	0.0223** [2.055]	0.0318** [2.593]	0.0323** [2.257]
urbanisation	0.0397 [1.306]	0.0611* [1.768]	0.0834** [2.272]
Controls *	yes	yes	yes
Firm FE:	yes	yes	yes
Dummy: year	yes	yes	yes
Observations	38460	47922	55113
R-squared	0.019	0.071	0.06
Number of id	11205	10788	12211

* size, ownership, constant

Moulton corrected errors, t statistics in brackets

*** $p < 0.01$, ** $p < 0.05$, * $p < 0.1$

6.3 Trade intensity

So far we have defined trading firms as being to any extent an exporter or importer at a given period. To paint a more elaborate picture instead of using trader status dummies variables to capture the intensity of trade were formed. We defined *expshare* and the share of export sales in the overall sales activity of the firm.

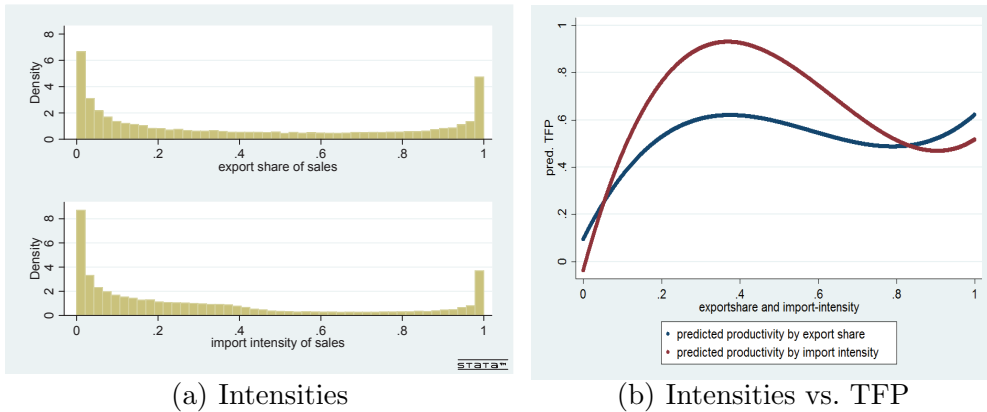
$$\text{expshare}_{it} = \frac{\text{export}_{it}}{\text{sales}_{it}} \quad (9)$$

While variable impint is to capture import intensity of exports is:

$$\text{impint}_{it} = \frac{\text{imports}_{it}}{\text{sales}_{it} - \text{exports}_{it} + \text{imports}_{it}} \quad (10)$$

The variables take on values between zero and one, increasing with respect to the degree of involvement in the activities. Note, that variable impint measures involvement in both activities, as most firms are both exporters and importers. If a firm exports only the variable is zero, if imports only it ranges till half. If the firms is engaged in both activities it increases from zero towards one increasing with the involvement in both activities. Being close to one means intensive involvement in both activities. Left panel of Figure 4 pictures the distribution of the two variables over our sample. For better visibility only nonzero values are displayed.

Fig. 4. *Trading intensities and their connection to TFP*



Panel a) shows the histogram of exportshare above and import intensity below. Panel b) shows the predicted TFP by third-order polynomial of exportshare and import intensity

On average trading firms are international traders in our sample are 60 per cent more productive, however the relationship between trade intensity and productivity is mostly nonlinear. In the right panel of Figure 4 TFP is plotted as function of a third degree polynomial of both intensities. The figure clearly shows that productivity and trade intensity are not linearly related and most productive trading firms are with export share and import intensity around 0.4 and those who are the intense traders having intensities close to one. Also, the high productivity premia of importers with respect to exporters is apparent.

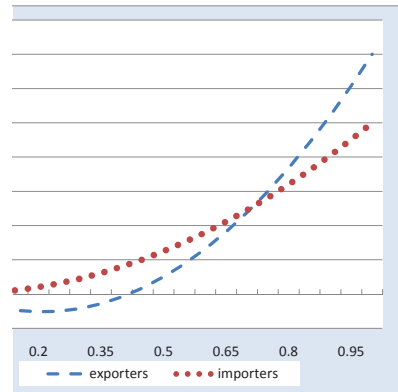
To assess the role of trade intensity the cross terms of intensity variables and their squares with agglomeration measure are included in the 1 specification. The fixed effect results displayed in Table 10 imply that agglomeration premia

Table 10
Agglomeration premia by trade intensity

Dep. Var.: TFP Productivity	<i>exporters</i>		<i>importers</i>
agglomeration	0.141* [1.732]	agglomeration	0.145* [1.948]
expshare	0.464* [1.906]	impint	0.513* [1.958]
expshare ²	-0.938*** [-3.618]	impint ²	-0.735*** [-2.724]
agglomeration x expshare	-0.0520** [-2.375]	agglomeration x impint	-0.029 [-1.256]
agglomeration x expshare ²	0.127*** [5.291]	agglomeration x impint ²	0.0519* [1.904]
Controls *	yes	Controls *	yes
Firm FE:	yes	Firm FE:	yes
Dummy: year	yes	Dummy: year	yes
Observations	47922	Observations	55113
R-squared	0.03	R-squared	0.022
Number of id	10788	Number of id	12211

* size,foreign ownership, constant
Moulton corrected errors, t statistics in brackets
*** $p < 0.01$, ** $p < 0.05$, * $p < 0.1$

Fig. 5. *Trading intensities and their connection to TFPs*



The figure shows the estimated agglomeration premia of exporters (lines) and importers (dots) as function of exportshare and import intensity as implied by the results of Table 10.

of traders increase with trade intensity. The estimated changes in agglomeration premium with the change of trade intensity are summarised in Figure 5. We find that firms with the highest trade intensity are responsible for the higher agglomeration premium of traders. While in case of exporters we see an initial negative agglomeration coefficient which turns positive around 0.4, the agglomeration premium for importers appear always positive.

7 Concluding Remarks

This paper investigated whether international traders are more sensitive to the density of the economic environment. A rich panel of Hungarian firms from 1992-2003 was used with detailed information on balance sheet and export-import activity and examine the premia of agglomeration economy firms at the micro-region level (NUTS 4). It was shown that international traders are more productive in a more agglomerated environment. Fixed effect regressions across trading firm imply that traders in twice as agglomerated environment are 12-16 percent more productive. This result is robust to controlling for the difference in characteristics of trading and nontrading firm and outlying manufacturing density represented by the capital, though the coefficients are smaller. Similar productivity difference across nontrading firms were found smaller or nonsignificant.

The larger part of the difference comes from the traders in more diverse environment are more productive, but also localisation seems to matter. Traders are on average 3.4 percent more productive in an environment that contains twice as many workers of their own sector, while the corresponding figure for non-traders is only 2.3 percent. We also find, that agglomeration premium increases with trade intensity and is associated more with importing activity. These findings imply that international trade status is an important heterogeneity that should be taken into account when assessing agglomeration economies at firm level.

Our observation may be consistent with several phenomena. First, agglomerated environment enhances foreign trade related activities, provides better flow of information about new market possibilities, better transportation and logistics services and workers with higher skills and knowledge of foreign language. Second, it is also possible that selection effects between trading and non-trading firms act differently: the least productive traders are less likely to afford congestion effects of agglomeration. Third, it is also possible trade related first geography amenities and agglomerations coincide as in the case of a harbour city. Thus traders in other areas would suffer a more than proportionate disadvantage. We believe that after having controlled for regional characteristics the first two options are more likely.

Hungary is a rather small open and landlocked economy, which does not necessarily make it a good playground for economic geography investigations. However, we believe that our results might serve as a possible lower bound for international traders sensitivity to agglomeration economies and in their role of assessing its scope.

From policy point of view our results are interesting for the following reasons.

When evaluating cluster formation policies and promotions of agglomerated economies it is important to consider the openness of the sectors in question. Producers of nontradable goods might not benefit from these policies the same. This also implies, that policies promoting agglomeration of trading firms or attracting FDI is even more important tool of regional policy.

References

- Abdel-Rahman, H. M. (1988), 'Product differentiation, monopolistic competition and city size', *Regional Science and Urban Economics* **18**(1), 69–86.
- Acharya, R. C. & Keller, W. (2008), Estimating the productivity selection and technology spillover effects of imports, NBER Working Papers 14079, National Bureau of Economic Research, Inc.
- Aitken, B., Hanson, G. H. & Harrison, A. E. (1997), 'Spillovers, foreign investment, and export behavior', *Journal of International Economics* **43**(1-2), 103–132.
- Altomonte, C. & Békés, G. (2009), 'Trade complexity and productivity', IE-HAS working papers 14.
- Amiti, M. & Konings, J. (2007), 'Trade liberalization, intermediate inputs, and productivity: Evidence from indonesia', *American Economic Review* **97**(5), 1611–1638.
- Audretsch, D. B. & Feldman, M. P. (n.d.), Knowledge spillovers and the geography of innovation, in J. V. Henderson & J. F. Thisse, eds, 'Handbook of Regional and Urban Economics'.
- Baldwin, R. E. & Okubo, T. (2006), 'Heterogeneous firms, agglomeration and economic geography: spatial selection and sorting', *Journal of Economic Geography* **6**(3), 323–346.
- Békés, G. & Muraközy (2008), 'Firm performance and switching to export', mimeo, IE-HAS.
- Békés, G., Muraközy, B. & Harasztosi, P. (2009), 'Firms and products in international trade: Data and patterns for hungary', Cefig Workig Papers no. 9.
- Bernard, A. B. & Jensen, B. (2004), 'Why some firms export', *The Review of Economics and Statistics* **86**(2), 561–569.
- Bernard, A. B., Jensen, J. B., Redding, S. J. & Schott, P. K. (2007), 'Firms in international trade', *Journal of Economic Perspectives* **21**(3), 105–130.
- Bernard, A. & Jensen, B. (1999), 'Exceptional exporter performance: cause, effect, or both?', *Journal of International Economics* **47**(1), 1–25.
- Bleakley, H. & Lin, J. (2007), Thick-market effects and churning in the labor market: evidence from u.s. cities, Working Papers 07-23, Federal Reserve Bank of Philadelphia.

- Bond, S. (2002), Dynamic panel data models: a guide to microdata methods and practice, CeMMAP working papers CWP09/02, Centre for Microdata Methods and Practice, Institute for Fiscal Studies.
- Briant, A., Combes, P.-P. & Lafourcade, M. (2008), Dots to boxes: Do the size and shape of spatial units jeopardize economic geography estimations?, PSE Working Papers 2008-66, PSE (Ecole normale suprieure).
- Brooks, E. (2003), Why don't firms export more? product quality and colombian plants, Santa Cruz Department of Economics, Working Paper Series 1036, Department of Economics, UC Santa Cruz.
- Brühlhart, M. & Mathys, N. A. (2008), 'Sectoral agglomeration economies in a panel of european regions', *Regional Science and Urban Economics* **38**(4), 348–362.
- Cainelli, G. & Lupi, C. (2008), Does spatial proximity matter? micro-evidence from italy, Economics & Statistics Discussion Papers 08042, University of Molise.
- Castellani, D., Serti, F. & Tomasi, C. (2008), Firms in international trade: Importers and exporters heterogeneity in the italian manufacturing industry, LEM Papers Series 2008/04, Laboratory of Economics and Management (LEM), Sant'Anna School of Advanced Studies, Pisa, Italy.
- Ciccone, A. (2002), 'Agglomeration effects in europe', *European Economic Review* **46**(2), 213–227.
- Ciccone, A. & Hall, R. E. (1996), 'Productivity and the density of economic activity', *American Economic Review* **86**(1), 54–70.
- Clerides, S. K., Lach, S. & Tybout, J. R. (1998), 'Is learning by exporting important? micro-dynamic evidence from colombia, mexico, and morocco', *The Quarterly Journal of Economics* **113**(3), 903–947.
- Combes, P. P., Duranton, G., Gobillon, L., Puga, D. & Roux, S. (2009), The productivity advantages of large cities: Distinguishing agglomeration from firm selection, Working Papers 2009-02, Instituto Madrilenio de Estudios Avanzados (IMDEA) Ciencias Sociales.
- Combes, P.-P., Duranton, G., Gobillon, L. & Roux, S. (2008), Estimating agglomeration economies with history, geology, and worker effects, CEPR Discussion Papers 6728, C.E.P.R. Discussion Papers.
- Combes, P.-P. & Overman, H. G. (2004), The spatial distribution of economic activities in the european union, in J. V. Henderson & J. F. Thisse, eds, 'Handbook of Regional and Urban Economics', Vol. 4 of *Handbook of Regional and Urban Economics*, Elsevier, chapter 64, pp. 2845–2909.
- Dekle, R. & Eaton, J. (1999), 'Agglomeration and land rents: Evidence from the prefectures', *Journal of Urban Economics* **46**(2), 200–214.
- Foster, N. & Stehrer, R. (2008), Sectoral productivity, density and agglomeration in the wider europe, Micro-Dyn Working paper 01/08, The Vienna Institute for International Economic Studies.

- Glaeser, E. L., Kallal, H. D., Scheinkman, J. A. & Shleifer, A. (1992), ‘Growth in cities’, *Journal of Political Economy* **100**(6), 1126–52.
- Glaeser, E. L. & Mare, D. C. (2001), ‘Cities and skills’, *Journal of Labor Economics* **19**(2), 316–42.
- Halpern, L., Koren, M. & Szeidl, A. (2009), Imported inputs and productivity, Cefig working papers, CeFIG Working Papers no. 8.
- Hanson, G. H. (2000), Scale economies and the geographic concentration of industry, Nber working papers, National Bureau of Economic Research, Inc.
- Henderson, J. V. (2003), ‘Marshall’s scale economies’, *Journal of Urban Economics* **53**(1), 1–28.
- Imbens, G. W. & Wooldridge, J. M. (2008), Recent developments in the econometrics of program evaluation, IZA Discussion Papers 3640, Institute for the Study of Labor (IZA).
- Imbriani, C., Morone, P. & Testa, G. (2008), Exporting quality: is it the right strategy for the italian manufacturing sector?, MPRA Paper 13327, University Library of Munich, Germany.
- Jacobs, J. (1969), *The Economy of Cities*, Random House, New York.
- Jaffe, A. B., Trajtenberg, M. & Henderson, R. (1993), ‘Geographic localization of knowledge spillovers as evidenced by patent citations’, *The Quarterly Journal of Economics* **108**(3), 577–98.
- Kneller, R. & Pisu, M. (2007), ‘Industrial linkages and export spillovers from fdi’, *The World Economy* **30**(1), 105–134.
- Koenig, P. (2005), ‘International trade and internal geography: Theory and firm-level evidence’, Phd Dissertation, Univ. Paris I, Sorbonne.
- Krugman, P. (1991), ‘Increasing returns and economic geography’, *Journal of Political Economy* **99**(3), 483–99.
- Lovely, M. E., Rosenthal, S. S. & Sharma, S. (2005), ‘Information, agglomeration, and the headquarters of u.s. exporters’, *Regional Science and Urban Economics* **35**(2), 167–191.
- Lucas, R. J. (1988), ‘On the mechanics of economic development’, *Journal of Monetary Economics* **22**(1), 3–42.
- Marshall, A. (1920), *Principles of Economics*, Prometheus Books.
- Martin, P., Mayer, T. & Mayneris, F. (2008), Spatial concentration and firm-level productivity in france, CEPR Discussion Papers 6858, C.E.P.R. Discussion Papers.
- Mayer, T. & Ottaviano, G. (2008), ‘The happy few: The internationalisation of european firms’, *Intereconomics: Review of European Economic Policy* **43**(3), 135–148.
- Melitz, M. J. (2003), ‘The impact of trade on intra-industry reallocations and aggregate industry productivity’, *Econometrica* **71**(6), 1695–1725.
- Melitz, M. J. & Ottaviano, G. I. P. (2008), ‘Market size, trade, and productivity’, *Review of Economic Studies* **75**(1), 295–316.

- Moulton, B. R. (1990), ‘An illustration of a pitfall in estimating the effects of aggregate variables on micro unit’, *The Review of Economics and Statistics* **72**(2), 334–38.
- Olley, G. S. & Pakes, A. (1996), ‘The dynamics of productivity in the telecommunications equipment industry’, *Econometrica* **64**(6), 1263–97.
- Ottaviano, G., Tabuchi, T. & Thisse, J.-F. (2002), ‘Agglomeration and trade revisited’, *International Economic Review* **43**(2), 409–436.
- Pakes, A. (1991), Dynamic structural models: Problems and prospects. mixed continuous discrete controls and market interactions, Cowles Foundation Discussion Papers 984, Cowles Foundation, Yale University.
- Rosenthal, S. S. & Strange, W. C. (n.d.), Evidence on the nature and sources of agglomeration economies, *in* J. V. Henderson & J. F. Thisse, eds, ‘Handbook of Regional and Urban Economics’.
- Soon, L., K. D. & Fraser, C. (n.d.), Making tacit knowledge explicit: Designing an export trading knowledge portal, *in* A. Ruth, ed., ‘Quality and Impact of Qualitative Research. 3rd annual QualIT Conference, Brisbane’.
- Strøjer Madsen, E., Smith, V. & Dilling-Hansen, M. (2003), Industrial clusters, firm location and productivity: Some empirical evidence for danish firms, Working Papers 03-26, University of Aarhus, Aarhus School of Business, Department of Economics.

8 Technical Appendix

This appendix section describes the productivity estimation approached we used. To address econometric problems arising from selection, input endogeneity and that of trade status we used a modified version of the estimation method proposed by Olley & Pakes (1996), (OP). We start the following Cobb-Douglas production function using indices i for the firm and t for time.

$$y_{it} = \beta_0 + \beta_k k_{it} + \beta_l l_{it} + \beta_m m_{it} + \omega_{it} + \epsilon_{it} \quad (11)$$

where y_{it} , k_{it} , l_{it} , m_{it} denote the natural logarithm of output, capital, labour and inputs. Productivity is denoted by ω_{it} and ϵ_{it} stands for the measurement error in output. In our analysis output is captured by real value added, capital is by the deflated value of tangible fixed assets and labour by annual employment. Productivity is assumed to follow a first order Markov process:

$$\omega_{i,t+1} = E[\omega_{i,t+1}|\omega_{i,t}] + \eta_{i,t+1} \quad (12)$$

with η_{it} being an exogenous shock process.

Estimating equation [11] by OLS entails several problems. First, due to the annual periodicity of the data, it is safe to assume, that firms get a fair perception of productivity process for the period at beginning of the year and are able to change their decision on input choices accordingly. That is, k_{it} , l_{it} are correlated with ω_{it} , which makes estimation biased and inconsistent. Secondly, every year firms whose productivity falls below a certain threshold will be forced to shut down. This implies, that next year productivity distribution will be of a selected sample of the surviving firms. Ignoring the selection problems will again bias the estimation of the input coefficients. Thirdly, as internalisation plays primary role in our analysis we need to consider the possibility that investment and exit behaviour of the firm is correlated with its export and import status. Furthermore, trading firms, especially importers face different input prices. Exchange rate changes over the examined period might induce a measurement error in the prices used in the estimation. This problem raised by e.g. Amiti & Konings (2007). To account for these issues we used two modifications to the standard OP procedure. On one hand, when calculating value added, imported input values account for the changes in real exchange rate. On the other hand the OP procedure investment processes involves firms export and import status.

The OP relies on the existence of a monotonic relationship between investment i_{it} , capital and productivity, see Pakes (1991). Therefore this relationship can be inverted to express productivity of the firm.

$$\omega_{i,t} = g(k_{it}, i_{it}) \quad (13)$$

For aforementioned reasons we also include trade variables in the investment decision. X is export status dummies, taking up one when the firms show activity of trade. The dummy for import activity was split to indicate trade from low and from high wage countries, ML_{it} and MH_{it} respectively. Substituting for the unobserved productivity term:

$$y_{it} = \beta_l l_{it} + \beta_m m_{it} + \phi_{it}(i_{it}, k_{it}, X_{it}, ML_{it}, MH_{it}) + \epsilon_{it} \quad (14)$$

This regression gives consistent estimates of β_l and β_m . Since the functional form of $\phi(\cdot)$ is unknown, we use a linear model that includes full interaction term polynomials of the arguments. The estimation provides $\hat{\phi}$.

The second stage of the estimation, that control for the selection bias caused by low productivity firms exiting the sample gives the estimates of the remaining coefficients. The probability that a firm survives to t (s_t) can be expressed as being above a certain productivity threshold $\underline{\omega}_t$. The survival probability (P_t) can be estimated by probit regression as a polynomial function of capital and investment and trade status crossterms.

$$Pr(s_t = 1 | \underline{\omega}_t(k_t)) = \varphi(i_{t-1}, k_{t-1}, X_{t-1}, ML_{t-1}, MH_{t-1}) \quad (15)$$

Rearranging 11 and taking expectations given that the firm survived, we have:

$$E(y_{it} - \beta_l l_{it} - \beta_m m_{it} | k_{it}, s_t = 1) = \beta_0 + \beta_k k_{it} + E(\omega_{it} | \omega_{i,t-1}, s_t = 1) \quad (16)$$

Using the Markov property of productivity, and the notion that once survival and past productivity is realised k_{it} is known.

$$\begin{aligned} y_{it} - \beta_l l_{it} - \beta_m m_{it} &= \beta_k k_{it} + E(\omega_{it} | \omega_{i,t-1}, s_t = 1) + \\ &+ \omega_{i,t+1} - E[\omega_{i,t+1} | \omega_{i,t}] - \eta_{i,t+1} \\ &= \beta_k k_{it} + E(\omega_{it} | \omega_{i,t-1}, s_t = 1) + \xi_{it} - \eta_{i,t+1} \end{aligned} \quad (17)$$

where ξ_{it} is the surprise efficiency for surviving firms, which does not effect last period exit or investment choice. The remaining unknown $E(\omega_{it} | \omega_{i,t-1}, s_t = 1)$ is a function of past unobserved productivity and surviving probability. Olley & Pakes (1996) suggest to proxy these variables with the estimated survival probability and the lagged value of investment function estimated in the first stage:

$$y_{it} - \beta_l l_{it} - \beta_m m_{it} = \beta_k k_{it} + \theta(P_{t-1}, \phi_{i,t-1} - \beta_k k_{it}) + \nu_{it} + \epsilon_{i,t-1} \quad (18)$$

Using the estimated values of P_{t-1} , $\phi_{i,t-1}$ and of β_l , β_m from previous stages,

expressing θ as polynomial of its components, one can estimate remaining coefficients running equation 18. Using all estimated coefficients the log of TFP, as residual of the production function can be calculated.

$$tfp_{it} = \hat{\beta}_0 + \hat{\beta}_k k_{it} + \hat{\beta}_l l_{it} + \hat{\beta}_m m_{it} \quad (19)$$

9 Appendix of Tables and Graphs

Fig. 6. Spatial distribution of Manufacturing Productivity 1999

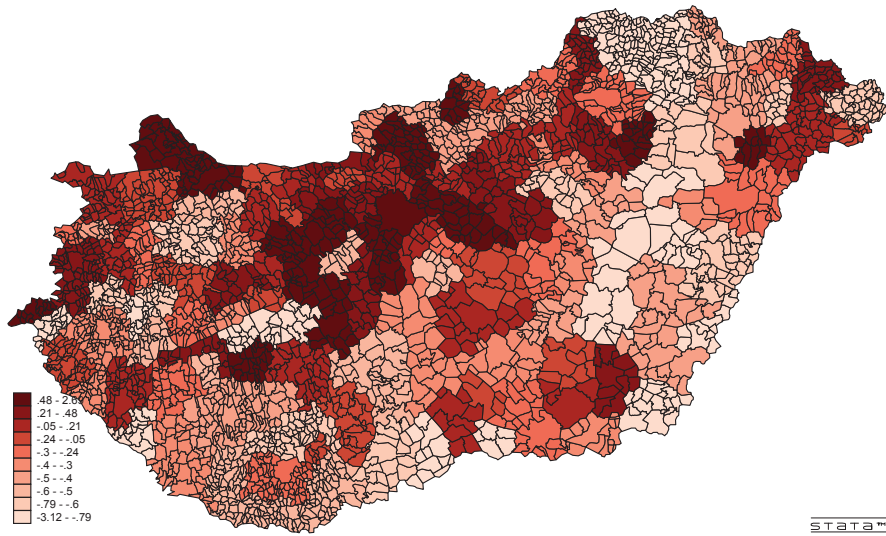


Fig. 7. Spatial distribution of Manufacturing Density 1999

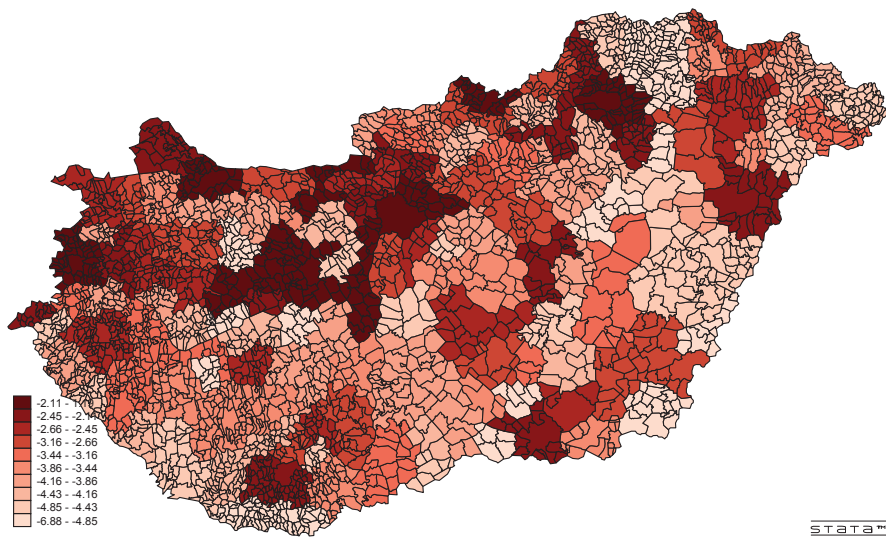


Table 11
Basic Geographical Description

County	Area (km^2)	Population (mean)	Num.Districts
Budapest	525	1865321	1
Baranya	4430	406600	8
Bács-kiskun	8445	540004	10
Békés	5631	398598	6
Borsod-Abaúj-Zemplén	7247	741667	11
Csongrád	4263	426202	7
Fejér	4359	424703	7
Győr-Moson-Sopron	4208	432209	6
Hajdú-Bihar	6211	547807	7
Heves	3637	326300	6
Komárom-Esztergom	2265	313982	7
Nógrád	2544	220236	6
Pest	6393	1021686	14
Somogy	6036	335456	9
Szabolcs-Szatmár-Bereg	5937	574007	10
Jász-Nagykun-Szolnok	5582	416675	6
Tolna	3701	247895	5
Vas	3336	269367	9
Veszprém	4493	371070	9
Zala	3784	298131	6
	4651	508896	7.5

Table 12
Micro-region characteristics

MR	avg. Pop.	avg. manuf. empl.	avg. N. of firms	area (ha)	MR	avg. Pop.	avg. manuf. empl.	avg. N. of firms	area (ha)
Ajka	60584	5651	72	74344	Mezőkovácsháza	48823	471	11	93355
Aszód	36011	1035	41	30907	Mezőkövesd	47021	1086	30	77048
Baja	78086	3466	107	118996	Miskolc	277565	14984	378	101757
Baktalórántháza	23302	429	10	31800	Mohácsi	54322	2452	67	87944
Balassagyarmat	43322	1717	45	53188	Monor	36650	303	28	23573
Balatonalmádi	24719	3441	40	28649	Mosonmagyaróvár	71521	7333	128	93070
Balatonfüred	21769	142	22	31847	Mátészalka	66579	1826	30	62474
Balmazújváros	30549	645	11	73122	Mór	28165	4184	34	29456
Barcs	26846	790	28	69647	Mórahalom	16839	40	6	41172
Berettyóújfalu	66177	1811	41	137231	Nagyatád	28823	545	21	64707
Bicske	34701	440	24	61872	Nagykanizsa	83951	3562	71	89254
Bonyhád	30873	2781	37	37756	Nagykálló	32027	693	21	37741
Budapest	1905661	188280	6899	52516	Nagykátá	72674	1198	43	77945
Budaörs	110334	5073	340	20791	Nyírbátor	44369	577	24	69595
Bácsalmás	18426	424	8	38109	Nyiregyháza	214818	9329	309	143814
Bátonyterenye	27803	1308	32	27839	Orosháza	66040	3810	72	84858
Békéscsaba	167954	8326	185	141581	Oroszlány	28683	1382	21	19936
Cegléd	116920	3291	123	123403	Paks	48957	2072	44	75687
Cellőmölk	27297	3064	29	47420	Piliscsaba	75344	3550	222	37991
Csenger	14176	573	9	24658	Polgár	14678	91	8	38387
Csepreg	11407	318	14	19683	Pápa	64053	3776	73	100140
Csongrád	25403	1557	20	33924	Pásztó	34134	597	34	55165
Csorna	36514	1266	26	63276	Pécsi	206231	10890	397	94848
Csurgó	19200	663	12	49619	Pécsváradi	11214	173	13	20014
Dabas	39645	1152	63	49870	Pétervárasra	22949	375	13	42626
Debrecen	290521	16847	383	153196	Püspökladány	52653	890	28	95352
Dombóvár	35222	1325	41	50947	Ráckeve	107418	3754	260	62846
Dorog	39919	1727	52	23270	Rétság	25078	1057	30	43502
Dunakeszi	57091	2989	124	10308	Salgótarján	70035	6871	95	46980
Dunaújváros	109920	11741	127	75067	Sarkad	26739	238	6	54661
Edelény	35780	645	20	73935	Sellye	13424	142	5	41056
Eger	96729	6551	150	74104	Siklősi	35855	613	27	62410
Encs	35031	557	9	79612	Siófok	47056	637	46	62783
Enying	24674	81	5	48090	Sopron	90744	6743	153	85737
Esztergom	54478	7748	129	30486	Szarvas	42455	2688	42	73982
Fehérgyarmat	38858	711	15	69641	Szeged	206262	10392	355	87598
Fonyód	28097	1006	36	42887	Szeghalom	48271	958	20	114670
Füzesabony	37093	848	22	66939	Szekszárd	89506	4149	114	103027
Gyál	89955	2392	126	43284	Szentendre	63226	2819	204	34262
Győr	170880	19304	336	72735	Szentes	46490	1618	36	81388
Gyöngyös	76900	1012	18	73344	Szentgotthárd	15363	2163	26	23344
Gárdonyi	32318	417	28	37890	Szerencs	63546	724	42	83676
Gödöllő	103616	7494	186	44961	Szigetvári	28263	722	20	66887
Hajdúböszörmény	59222	3677	64	73106	Szikszó	19802	47	3	31165
Hajdúszoboszló	33295	730	33	50674	Szob	12384	429	16	31486
Hatvan	56403	2697	91	36955	Szolnok	122525	9847	204	87752
Heves	36992	1552	47	69779	Szombathely	115111	13386	210	64636
Hódmezővásárhely	61060	5060	111	70782	Szécsény	20380	1492	23	27741
Jánoshalma	17896	622	14	39914	Székesfehérvár	163377	17441	313	118133
Jászberény	88411	6757	96	116146	Sárbogárd	30148	1042	8	65368
Kalocsa	56803	1725	63	102903	Sárospatak	28370	1018	31	47760
Kaposvár	123577	4553	126	157474	Sárvár	37563	3676	28	59029
Kapuvár	25833	1756	28	38271	Sásdi	16177	449	22	38387
Karcag	77238	3801	90	138360	Sátoraljaújhely	44391	3288	32	71158
Kazincbarcika	66189	5047	44	50375	Sümege	16524	510	15	30640
Kecskemét	163329	9347	339	148318	Tab	17201	1650	14	47962
Keszthely	46359	2196	40	50456	Tamási	43323	1966	40	102613
Kisbér	21270	650	28	51075	Tapolca	38107	829	34	54021
Kiskunfélegyháza	52416	3716	63	81072	Tata	38881	1610	94	30678
Kiskunhalas	46876	1398	58	82635	Tatabánya	88972	3905	174	33166
Kiskunmajsa	16932	892	21	39192	Tiszafüred	41934	799	17	84661
Kiskőrös	58125	1548	69	113033	Tiszavasvári	28534	2786	11	38167
Kistelek	19498	75	10	41020	Tiszaújváros	46750	6196	54	53274
Kisvárd	69564	1267	23	52835	Tét	30572	758	18	55778
Komló	42590	1766	60	31462	Törökszentmiklós	47022	1093	34	60332
Komárom	41181	1448	58	37898	Vasvár	15938	593	10	37414
Kunszentmiklós	30676	873	24	80281	Veszprém	86130	7820	181	65670
Kunszentmárton	40238	855	23	70923	Vác	71056	5074	126	47720
Kőszeg	17812	2358	19	18505	Várpalota	37459	3869	34	27045
Körmeny	22502	950	17	33091	Vásárosnamény	37626	699	17	62940
Lengyeltóti	12193	141	8	27095	Zalaegerszeg	105617	8273	166	99270
Lenti	24386	1242	33	66311	Zalaszentgrót	18967	1077	26	32712
Letenye	19602	358	16	40409	Zirc	26455	410	18	48904
Makó	51303	1648	33	70385	Ózd	76815	3418	60	54957
Marcali	32942	1453	27	81409	Óriszentpéter	7577	670	11	30523

Table 13. Agglomeration premium by trading activity, robustness

Dep. Var.: TFP	Plain FE		Moulton Correction		Trimmed Sample		Spatial lags		Excluding Budapest			
	never	occasionally always	never	occasionally always	never	occasionally always	never	occasionally always	never	occasionally always		
agglomeration	0.0587*** [0.0208]	0.109*** [0.0189]	0.164*** [0.0234]	0.163*** [0.0578]	0.00623 [0.0320]	0.112* [0.0613]	0.170*** [0.0577]	0.0517 [0.0352]	0.0941** [0.0461]	0.167*** [0.0591]	0.023 [0.0266]	0.128*** [0.0612]
SL-agglomeration												
SL-productivity												
firmsize	0.0650*** [0.0103]	0.138*** [0.00682]	0.163*** [0.00993]	0.163*** [0.0339]	0.278*** [0.0269]	0.0106 [0.0415]	0.123*** [0.0380]	0.0681*** [0.0156]	0.123*** [0.0206]	0.159*** [0.0325]	0.0760*** [0.0206]	0.198*** [0.0349]
foreign ow.	-0.0133 [0.0160]	0.0257** [0.0131]	0.0749*** [0.0164]	0.0749*** [0.0178]	-0.0401*** [0.0121]	0.0227 [0.0250]	0.0604*** [0.0186]	-0.014 [0.0144]	0.0159 [0.0240]	0.0789*** [0.0177]	-0.00674 [0.0203]	0.0758*** [0.0270]
Constant	0.836*** [0.197]	1.239*** [0.180]	1.300*** [0.221]	1.846*** [0.536]	0.46 [0.288]	-0.804* [0.485]	-1.205** [0.522]	-0.901** [0.444]	-1.059* [0.540]	1.736*** [0.577]	-0.549** [0.216]	1.646*** [0.498]
dummy: year	yes	yes	yes	yes	yes	yes	yes	yes	yes	yes	yes	yes
firm fixed effect	yes	yes	yes	yes	yes	yes	yes	yes	yes	yes	yes	yes
Moulton corr. errors	no	no	no	yes	yes	yes	yes	yes	yes	yes	yes	yes
Observations	2776	48642	24276	24263	23358	37294	20413	32275	52384	24624	19489	16671
R-squared	0.023	0.037	0.082	0.037	0.063	0.018	0.076	0.022	0.033	0.081	0.028	0.106
Number of id	6817	8428	3960	3948	6585	7133	2729	7904	8832	4015	4546	2748